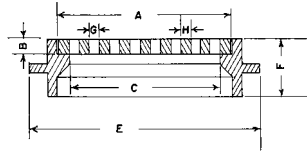


■ Note: When specifying/ordering grates, refer to "Choosing the Proper Inlet Grate" on pages 125-126.
 For a complete listing of FREE OPEN AREAS and WEIR PERIMETERS of all NEENAH grates, refer to pages 327-332.

R-3340 Series Slab-Type Frame, Grate with Anchor Flange

Heavy Duty

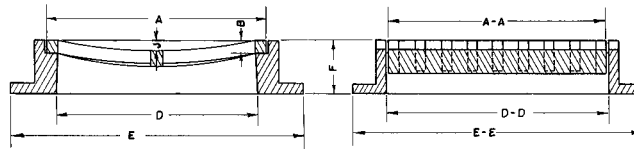
CATALOG NUMBER	GRATE TYPE	SQ. FT. OPEN	WEIR PERIMETER LINEAL FEET
R-3340-B	C	1.3	6.8
R-3340-D	C	1.2	7.5



Catalog No.	Dimensions in inches							
	A	B	C	D	E	F	G	H
R-3340-B	17 1/4 x 23 3/4	2	15 1/8 x 22	17 1/2 x 24	23 1/2 x 30	5	2 x 6	1 1/8
R-3340-D	20 x 25	2	18 x 23	20 x 25	26 x 31	5	1 1/2 x 4 3/4	1 5/8

R-3341 to R-3351 Series Concave Gutter Inlet Frame, Grate

Heavy Duty



CATALOG NUMBER	GRATE TYPE	SQ. FT. OPEN	WEIR PERIMETER LINEAL FEET
R-3341	K	0.3	3.2
R-3342	K	0.5	4.4
R-3344	K	1.1	6.2
R-3345	A	1.1	6.8
R-3346	C	1.4	8.9
R-3347	C	1.3	7.4
R-3347-A	C	2.3	10.4
R-3348	A	1.9	8.0
R-3349-A	K	1.8	7.7
R-3350	K	2.2	9.3
R-3351	C	2.7	9.3

Catalog No.	Dimensions in inches								
	A	A-A	B	D	D-D	E	E-E	F	J
R-3341	7 1/2	11 1/2	1 1/2	8	11 1/2	15 1/2	19	6	3/4
R-3342 *	11 1/2	15	1	10	15	30	-	9 1/2	1
R-3344 ***	13	24	2	13	24	23	34	9 1/2	1
R-3345	15	26	1 1/2	12	26	20	34	6	1 1/2
R-3346	15	38 1/2	1 1/4	16 1/2	40	23	47	7 1/2	1
R-3347	22 1/4	22 1/4	2 1/2	20 1/8	20 1/8	36	Di.	8	1/2
R-3347-A	22 7/8	39 5/8	2	18 1/2	35 1/4	29 3/4	46 1/2	6	1
R-3348	24	24	2	26 1/2	26 1/2	35	35	7	1
R-3349-A	18	28	2 1/4	16	26	25	35	4 1/2	3/4
R-3349-B	18	28	2 1/4	16	28 3/16	25	35	4 1/2	3
R-3350	28	28	1 3/4	29	29	35	35	6	1 3/8
R-3351 **	28	28	1 1/2	29	29	35	35	6	1 3/4

* Only available with 30" diameter base flange.
 ** Furnished with openings parallel with gutter.
 *** Grate supported by lugs.

Supplied By:

**TRENCHDRAIN
 SUPPLY**

877-903-7246

www.trenchdrainsupply.com

CLICK HERE to return to the Table of Contents